

PRESS ONLINE STORAGE SERVICE

O p e r a t i n g M a n u a l

C O N T E N T S

Concept Car

From a left menu, let's click the maker which wants to see!	P.1
Your exclusive list can be created by selecting only necessary pictures.	P.1
If you check detailed information,,,	P.2
Download an original picture.	P.2

Show's Photo

From a left menu, let's click the maker which wants to see!	P.3
Your exclusive list can be created by selecting only necessary pictures.	P.3
If you check detailed information,,,	P.4
Download an original picture.	P.4

Personal Photo

Let's add a new album!	P.5
Upload pictures. 1	P.5
Upload pictures. 2 (Explorer type and Drag & Drop type)	P.6
Edit pictures. (A comment input, move, copy, delete, and rearrange)	P.7
Edit an album. (A comment input, rearrange, and delete)	P.8
Your exclusive list can be created by selecting only necessary pictures.	P.9

Picture Library

Your exclusive list can be created by selecting only necessary pictures.	P.10
If you check detailed information,,,	P.11
Check mail-send log.	P.11

Concept Car

Concept cars are official picture/information offered by each exhibition maker. Since each maker's hottest information is displayed by list as album style, It is really convenient to collect & arrange hot news!

1. From a left menu, let's click a maker name to see!




let's click a maker name to see from a left menu first.

When you will click maker name, picture list of each maker is displayed next screen.

2. Your exclusive list will be created by selecting only necessary pictures.



If a picture list of a maker is displayed a check will be put into ☐ under picture to register, and **Register Library**  will be clicked.



When registered correctly, the surroundings of a picture become **red**, then it is registered **"Picture library"** as album list.

* In order to change the registered number on a left side menu, It is convenient to check the number of each maker's picture to register.

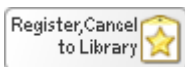
Toyota
(4/12 selection)

(Number of registered pictures / All number of pictures)

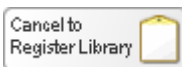


... If you click **"Registered library"**, you can see only registered picture.

* If you want to cancel the registered picture,
You remove the check of ☒ under picture, registration is canceled to click



or



button.


3.

If you check more detailed information,,,



When you click Picture in album, you can see more detailed information.



From  button, You can check the list of detailed information.



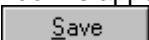
4.


An original picture is downloaded.

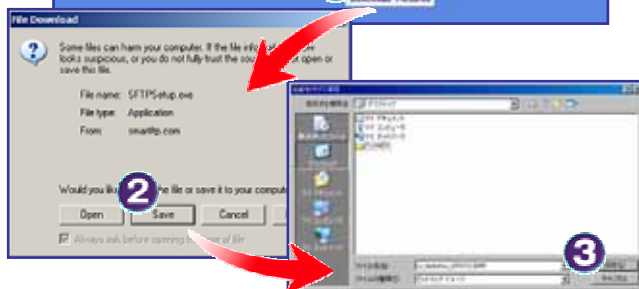


An original picture can also be downloaded from detailed page.

Let's click **Download Pictures** button.

"File Download" window is appeared, then you click 

From "Save in:" you decide the place in your own PC, then  is clicked.



Now, the original picture downloaded on your PC.

The main functions of a Concept Car become the above.
When you want to inform you the registered picture by mail. Please move to Page.10 " **Picture library** "

Show's Photo

Show's Photo is the picture information of each exhibited maker's picture which is taken at first press day.

In order to display on album Sequentially, the pictures which is taken by official camera man is informed, everybody the Presence quickly.

1. From a left menu, let's click a maker name to see!



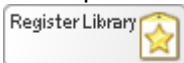
let's click a maker name to see from a left menu first.

When you will click maker name, picture list of each maker is displayed next screen.

2. Your exclusive list will be created by selecting only necessary pictures.



If a picture list of a maker is displayed a check will be put into ☐ under picture to register, and



will be clicked.



When registered correctly, the surroundings of a picture become red, then it is registered "Picture library" as album list.

* In order to change the registered number on a left side menu, It is convenient to check the number of each maker's picture to register.

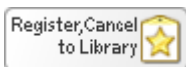
Toyota
(4/12 selection)

(Number of registered pictures / All number of pictures)

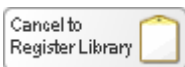


... If you click "Registered library", you can see only registered picture.

* If you want to cancel the registered picture,
You remove the check of ☒ under picture, registration is canceled to click



or



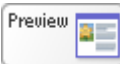
button.

3. If you check more detailed information,,,



When you click Picture in album, you can see more detailed information.



From  button, You can check the list of detailed information.




4. An original picture is downloaded.

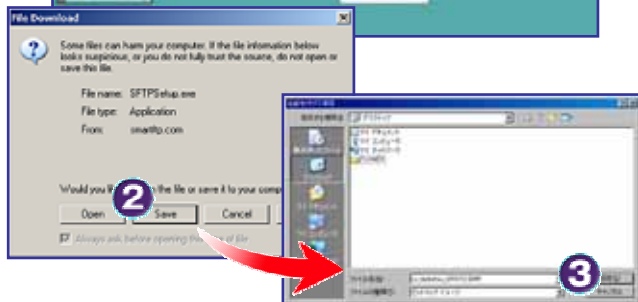


An original picture can also be downloaded from detailed page.

Let's click  button.

"File Download" window is appeared, then you click .

From "Save in:" you decide the place in your own PC, then  is clicked.



Now, the original picture downloaded on your PC.

The main functions of a Show's Photo become the above.
When you want to inform you the registered picture by mail, Please move to Page.10 " **Picture library** ".

Personal Photo can be saved and managed the pictures taken by digital still camera. Since the picture to 300MB can be saved, picture can be uploaded with the feeling same with saving a picture to your own computer.

1. A new album is added.



Let's create a new album first.

"Add Album" of a left menu is clicked.

"title"
"Body" is input.
"update from these contents" is clicked.

A screen changes and a new album is added to a left menu.

2. A picture is uploaded.



Next, pictures are uploaded.

From Upload Picture page,

button is clicked.

"Choose file" Window is appeared.
You move pictures from "Look in:" to Picture folder which you want to upload from your own PC.

*The number of pictures which can be uploaded at once is to 12 sheets.

The number of pics is changed to "12"

button is Clicked.

Upload is started.

For a while, upload will be completed,
"Picture List" is displayed.

There are other two types of methods which are “**Explorer**” type , “**Drag & Drop**” type besides uploading to select each pictures normally.



Explorer Type

It can upload per folder.

Choose the target folder from a folder tree.
Selection displays the uploadable pictures in a folder.

Put in and choose a check as ☐ of the picture to upload.

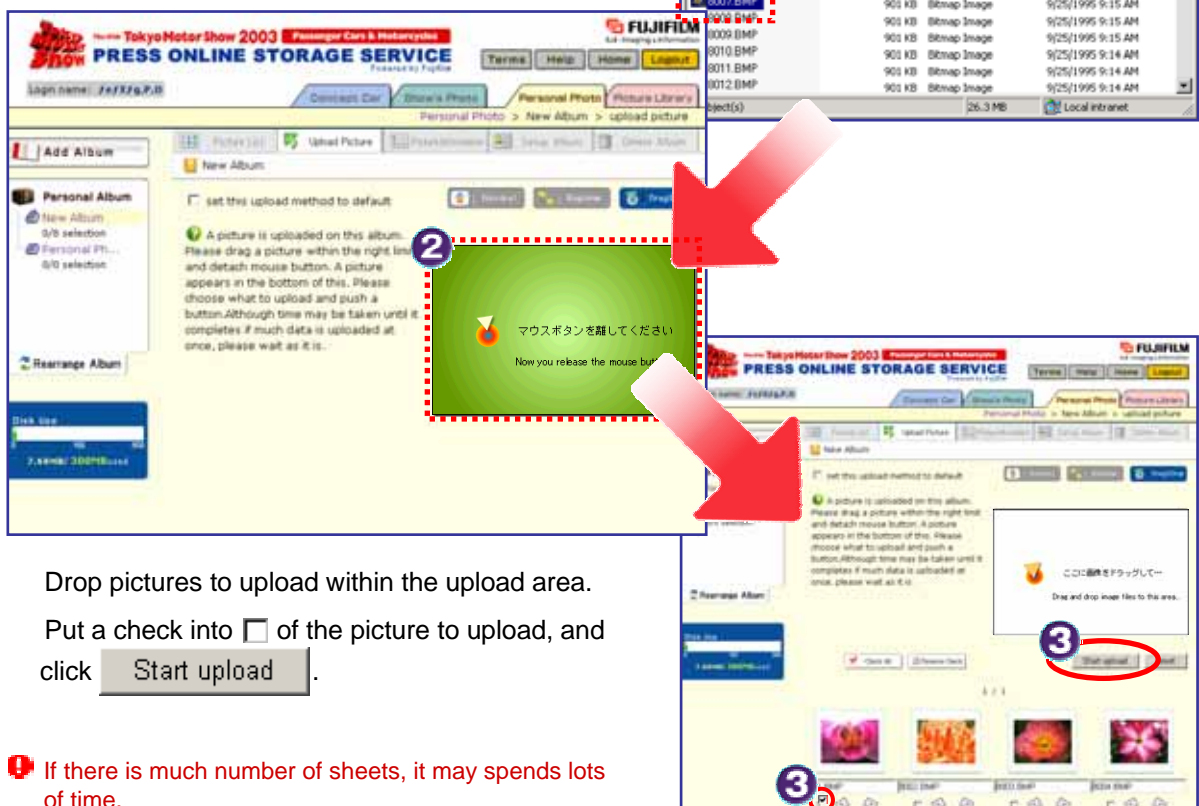
You click .

❗ If there is much number of sheets, it may spends lots of time.

Drag&Drop Type

You can select from local client by each picture or all of pictures.

You will drag picture to upload within uplaodable area.



Drop pictures to upload within the upload area.

Put a check into ☐ of the picture to upload , and click .

❗ If there is much number of sheets, it may spends lots of time.

3.

A picture is edited.
(A comment input, move, copy, delete, and rearrangement)

You input comments.



Picture Information button is clicked.

When Picture information is displayed, You can add, & change file name / Body of pictures.

update from these contents will be clicked and updated, after an input is completed.

If you check contents which you input,,, Click pictures and check detailed page. "Picture List" "Preview" button is clicked. Now window is appeared, and list of detailed pictures are displayed.

If you move, copy, delete, and rearrangement,,,



Picture Information Tool button is clicked.

You put into ☐ under a picture. If you choose "Move" "Copy" "Delete" button, It is reversed and you can use them.

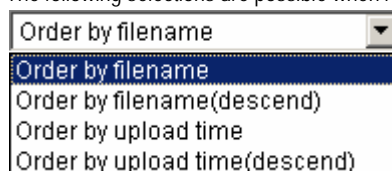
Move The selected pictures can be moved to other albums. The album of a movement place is chosen and you can move.

Copy The selected picture is copied. It can copy to the same album or other albums.

Delete The selected picture is deleted. Keep in mind that deleted data cannot be restored.

"Rearrange Album"

The following selections are possible when rearranging a picture.



4. An album is edited. (comment-inputs, rearrange and delete)

Comment is input and changed.



 **Setup Album** button is clicked.

“title “

“Body“

Is input contents which you to add, change.

update from these contents



is clicked.

Rearrange.



Click  **Rearrange Album** to left menu.

Next, you select album to change order.

You can rearrange album to click   move button.

When movement is completed,

rearrange is clicked.

The order of album on left menu also can be changed at the same time.

Delete an album.



The album name to delete is chosen.

If an album chooses (it is reversed yellow),

On  **Delete Album** page.

Yes, I will delete this album

Is clicked, then you can delete album.

❗ Keep in mind that deleted data cannot be restored.

5. Your exclusive list will be created by selecting only necessary pictures.

Before registering Picture library



From Picture List

You put into ☐ under a picture to register.

is clicked.

Registered Library

“Registered Library” is clicked, then you can see only registered pictures.

After registering Picture Library



When registered correctly, the surroundings of a picture become **red**, then it is registered “Picture Library” as album list.

* In order to change the registered number on a left side menu, It is convenient to check the number of each maker's picture to register.



(Number of registered pictures / All number of pictures)

* If you want to cancel the registered picture,
You remove the check of ☒ under picture, registration is canceled to click

or button.

The main functions of a Personal Photo become the above.
When you want to inform you the registered picture by mail. Please move to Page.10 “Picture library”

Picture Library

Picture Library can be checked pictures which is arranged (registered)

“Concept Car” “Show’s Photo” “Personal Photo”.

Moreover only necessary information can send mail with library URL to the partner of a list.
The accepted parson can see & download registered pictures by clicking URL.

1. Only necessary pictures to register are informed partner by mail.

The selecting page of a registration list

The screenshot shows the 'Picture Library' interface. It has three main sections: 'Concept Car', 'Show's Photo', and 'Personal Photo'. Each section contains a list of items with checkboxes. A 'Send by e-mail' button is located at the bottom of the page.

If you want to inform partner registered list,
You will put into ☐ of picture list first.

When sending list is completed

Send from these contents button
is clicked.

Let's input the contents of introduction, since the
input page of sent contents is displayed on the
next screen

Input page of sending mail

The screenshot shows the 'Input page of sending mail'. It has a form with the following fields: 'Your Name', 'From', 'To', 'Body', and a 'Send with password' checkbox. A 'Send from these contents' button is located at the bottom of the page.

Your Name

In order to inform your partner who send from, you will input here

From

Your [who introduces an album] mail address is input.

To

The mail address of the partner who introduces an album
is input.

Body

It is the message attached to the album to introduce.

In the case of an album with password, you had better inform your
password here.

Send with password

In case that your album is exhibited, you can protect by password.
In mail sending page, you input by alphanumeric character.

Send from these contents is clicked.

If mail sending is completed, the mail with URL of an album was indicated will arrive your partner.
Example

Mr. from I have kept the Picture Library of Tokyo Motor Show.

The picture (digital album service) service by on-line is introduced by support of Fuji Photo Film Co., Ltd. as part of the service
for presses in Tokyo Motor Show!

Preservation of the photoed photograph data can be performed taking advantage of the characteristic of the high-speed
communication circuit (B FLET'S) introduced into a press center this time, and the image data which a secretariat distributes
is also exhibited.

<http://fujifilm.tokyo-motorshow.com/View.asp?no=XXX&key=YYYY&m=0>

2. If you check registered pictures,,,

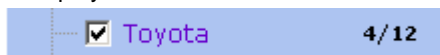


In case of forgetting registered pictures "Concept Car" "Show's photo" "Personal Photo". You can check registered pictures to click pictures which is taken by each maker's album.

Check page



The number of registered pictures is "Registered picture / All number of pictures" is displayed as below.



3. Check your mail-sending log.



You can check contents of mail after sending. Even if send-destination, sending date, it is convenient for confirming password, for forgetting to exhibit what kind of picture.

From the TOP page of a picture library

Send log button is clicked.

Next page can be checked as follows.

Send date

The date which is sending mail.

Sender name

It is your name who input at the time of mail sending.

Send from

It is your mail address at the time of sending mail.

Send to

It is the mail address of the partner who sent mail.

Password

It is displayed when a password is set up at the time of album on public.

Body

It is the input message when an album is introduced.

Preview

The picture registered at the time of album on public is displayed.